

XC-555/555P

Component / OEM



OUTLINE

The XC-555/555P is an ultra-compact, integrated 1/2 type IT CCD color camera ideally suited for a wide variety of applications such as machine vision, multimedia and remote monitoring. The XC-555/555P is designed so that a video output signal can be obtained by only providing a power supply of 12 V DC. Its ultra-compact, one-piece design eliminates the need for a bulky CCU (Camera Control Unit), allowing the XC-555/555P cameras to be easily installed in space-restricted areas. In addition, the XC-555/555P cameras use a unique, compact NF mount lens system that can be converted into a flexible C mount lens.

FEATURES

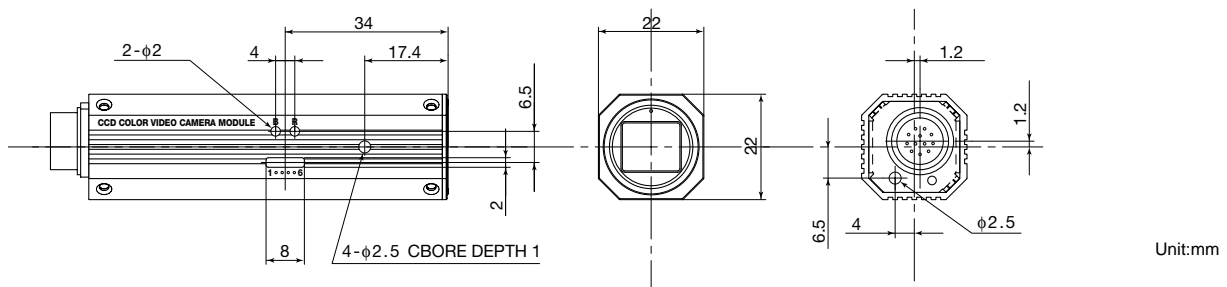
- 1/2 type IT CCD
- Ultra-compact and light-weight:
22 (H) x 22 (W) x 75 (D) mm, 60g
(7/8 x 7/8 x 3 inches, 2.1 oz)
- One piece camera - no bulky CCU
- Compact NF lens and lens mount
- CCD IRIS® function
- VBS and Y/C outputs
- External synchronization
- RS-232C interface to control camera functions*¹

*¹ The RS-232C switch is set to OFF at the factory. For details on how to change this setting, please refer to the Technical Manual.

SPECIFICATIONS

	XC-555 (NTSC)	XC-555P (PAL)
Image device	1/2 type IT CCD	
Color filter	Complementary color mosaic	
Effective picture elements	768 (H) x 494 (V)	752 (H) x 582 (V)
Lens mount	NF mount	
Sync system	Internal/External (automatic switching)	
External sync signal	HD/VD (2 to 4 Vp-p), 75 Ω VS (1 Vp-p), 75 Ω CSYNC (2 to 4 Vp-p), 75 Ω	
External sync frequency tolerance	VD/59.94 Hz ± 0.0009 Hz, HD/15734 Hz ± 0.22 Hz	VD/50 Hz ± 0.0005 Hz, HD/15625 Hz ± 0.22 Hz
Video output	VBS, Y/C (selected with the switch) VBS: 1 Vp-p, 75 Ω, sync negative Y: 1 Vp-p, 75 Ω C: C level depends on the composite video out signal	
Horizontal resolution	470 TV lines	460 TV lines
Minimum illumination	3 lux (F1.2, AGC ON)	
Sensitivity	2000 lux, F8, AGC OFF (0 dB)	
S/N ratio	48 dB (AGC OFF (0 dB))	46 dB (AGC OFF (0 dB))
Shutter speed	4 speeds selectable OFF, Flickerless, 1/1000 s, CCD iris	
CCD IRIS	Auto: 1/60 to 1/4000 s RS-232C: 1/60 to 100000 s ⁻¹	Auto: 1/50 to 1/4000 s RS-232C: 1/50 to 100000 s ⁻¹
	Max speed is not specified beyond 1/4000 seconds.	
White balance	4 modes selectable ATW, 3200 K, 5600 K, MANUAL	
Gamma	ON/OFF *Controlled by RS-232C ¹	
Gain control	2 modes selectable AGC, Fixed (0 dB)	
Output connector	DC IN, SYNC, VIDEO: multi 12-pin	
Power requirements	10.5 to 15 V DC	
Power consumption	2.4 W	
Operating temperature	0 to 40°C (32 to 104 °F)	
Storage temperature	-30 to 60°C (-22 to 140 °F)	
Operation humidity	20 to 80% (no condensation)	
Storage humidity	20 to 90% (no condensation)	
Shock resistance	70 G	
Dimensions	22 (H) x 22 (W) x 75 (D) mm (7/8 x 7/8 x 3 inches)	
Mass	60 g (2.1 oz)	
Regulation	UL 6500 listed, FCC Class B Digital Device, CE EN61326, AS4251.1+AS4252.1	
Supplied accessories	Lens mount cap (1), Tripod adaptor (1 set), Operating Instructions (1)	

DIMENSIONS



Unit:mm

12-pin connector pin assignment (External sync.)

1	Ground	7	VD/VS/VBS Input
2	+12 V	8	-/C Output (GND)
3	VBS/Y Output (GND)	9	-/C Output
4	VBS/Y Output	10	RS-232C (TXD) ¹
5	HD Input (GND)	11	RS-232C (RXD) ¹
6	HD Input	12	VD/VS/VBS Input (GND)

¹ The RS-232C switch is set to OFF at the factory. For details on how to change this setting, please refer to the Technical Manual.

- Sony Electronics Inc. (USA) HQ
- Sony of Canada Ltd. (CANADA)
- Sony Broadcast & Professional Europe HQ

Germany
France
UK
Nordic
Italy

1 Sony Drive, Park Ridge, NJ 07656

115 Gordon Baker Rd, Toronto, Ontario M2H 3R6
Schipholweg 275 1171 PK Badhoevedorp The Netherlands

Hugo-Eckener-Strasse 20 D-50829 Kohn
16-26 rue Morel 92110 Clichy
The Heights, Brooklands, Weybridge, Surrey KT13 0XW
Per Albin Hanssons vag 20 S-214 32 Malmo Sweden
Via Galileo Galilei 40 I-20092 Cinisello Balsamo, Milano

(TEL:+1-800-686-7669)
<http://www.sony.com/videocameras>
(TEL:+1-416-499-1414) (FAX:+1-416-497-1774)
(TEL:+31-20-44-99-351) (FAX:+31-20-44-99-333)
<http://www.sony-vision.com>
(TEL:+49-221-537-8923) (FAX:+49-221-537-491)
(TEL:+33-1-55-90-41-58) (FAX:+33-1-55-90-42-20)
(TEL:+44-990-331122) (FAX:+44-1932-817011)
(TEL:+46-40-190-800) (FAX:+46-40-190-450)
(TEL:+39-02-61-83-84-26) (FAX:+39-02-618-38-402)

MK7787V1IW02FEB

©2002 Sony Corporation. All rights reserved.
Reproduction in whole or in part without written permission is prohibited.
Design, features and specifications are subject to change without notice.
All non-metric weights and measures are approximate.
Sony and CCD IRIS are trademarks of Sony.

Printed in Japan on recycled paper.