



# **CV-A50/A60**

## **Compact Industrial Monochrome CCD Camera**



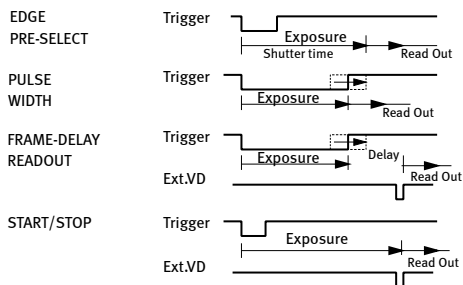
- *Compact size 1/2" and 1/3" monochrome CCD cameras*
- *CCIR: 752 (h) x 582 (v) pixels. EIA: 768 (h) x 494 (v) pixels*
- *Improved sensitivity, dynamic range and smear performance*
- *High S/N ratio up to 60 dB*
- *Extended range of functions and options compared with CV-M50*
- *Shutter speeds from Off to 1/10,000 sec.*
- *Programmable exposure*
- *Interlaced or non-interlaced scanning. Field or frame accumulation*
- *Internal, external HD/VD or random trigger synchronization*
- *Edge pre-select, pulse width control, start/stop trigger modes*
- *Long time exposure with external VD pulse interval*
- *Frame-delay read out in connection with pulse width controlled shutter*
- *Exposure enable EEN, write enable WEN and pixel clock output*
- *Short ASCII commands for fast mode setup via serial port*
- *Setup by Windows NT/2000/XP software via RS 232C*

***The leading manufacturer of high performance camera solutions***

# Specifications for CV-A50/A60

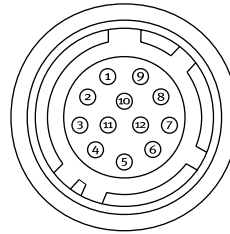
Specifications	CCIR	EIA
Scanning system	625 lines 25 frames/sec.	525 lines 30 frames/sec.
CCD sensor CV-A50 CCD sensor CV-A60	Monochrome 1/2" IT CCD Monochrome 1/3" IT CCD	
Sensing area	CV-A50 6.4 (h) x 4.8 (v) mm	CV-A60 4.9 (h) x 3.7 (v) mm
Effective pixels	752 (h) x 582 (v)	768 (h) x 494 (v)
Pixels in video output	737 (h) x 575 (v)	758 (h) x 486 (v)
Cell size	CV-A50 8.6 (h) x 8.3 (v) μm	CV-A60 6.5 (h) x 6.25 (v) μm
Resolution horizontal	570 TV lines	
Sensitivity on sensor	CV-A50 0.03 Lux, Max gain, 50% video CV-A60 0.05 Lux, Max gain, 50% video	
S/N ratio	CV-A50 59 dB	CV-A60 60 dB
Video output	Composite VS signal, 1.0 Vpp, 75 Ω	
Gamma	0.45 or 1.0	
Gain	Manual - Automatic	
Gain range	0 to +15 dB	
Accumulation	Field - Frame	
Synchronization	Int. X-tal. Ext HD/VD or random trigger	
Scanning	2:1 interlaced, non-interlaced	
HD sync. input/output	4 V, 75 Ω	
Trigger input	4 V, 75 Ω	
WEN output (write enable)	4 V, 75 Ω	
EEN out. (exposure enable)	4 V, 75 Ω	
Pixel clock output	4 V, 75 Ω	
Shutter	(Off), 1/100, 1/250, 1/500, 1/1000, 1/2000, 1/4000, 1/10,000 sec.	
Pulse width control	1.5 H to 1000 H	
Start/stop	1/50 to 1/10,000 sec. 1/60 to 1/10,000 sec.	
Long time exposure	1 field to ∞	
Programmable exposure	2.5 H to 252.5 H	
Frame delay readout	Time from PWC trigger input to ext. VD input	
Functions controlled by RS 232C	Scanning format, Trigger mode, Shutter speed, Trigger/WEN polarity, Accumulation, Shutter mode, Programmable exposure, AGC level, White clip, Setup, Manual gain, AGC/manual gain, Internal/potentiometer gain set, Gamma, Pixel clock, Commands and internal adjustments.	
Functions controlled by DIP switches	VD input/output, HD input/output, internal HD and VD 75 Ω termination on/off	
Operating temperature	-5°C to +45°C	
Humidity	20 - 80% non-condensing	
Storage temp./humidity	-25°C to 60°C./20% - 90 %	
Power	12V DC ± 10%. 1.5 W	
Lens mount	C-mount	
Dimensions	29 x 44 x 66 mm (HxWxD)	
Weight	150 g	

## Trigger/Readout Modes



## Connection Description

### DC-IN/SYNC.

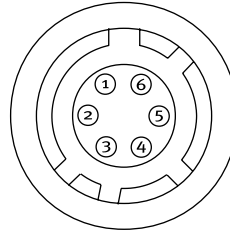


HIROSE HR10A-10R-12P

- Pin 1 Ground
- 2 +12V DC
- 3 Ground
- 4 Video output
- 5 Ground
- 6 HD input/HD output
- 7 VD input/VD output
- 8 Ground
- 9 Pixel clock output
- 10 WEN output
- 11 Trigger input
- 12 Ground

(Pin configuration compatible with EIAJ standard)

### TRIGGER



HIROSE HR10A-7R-6P

- Pin 1 TXD
- 2 RXD
- 3 Ground
- 4 Ground
- 5 Trigger input
- 6 EEN output

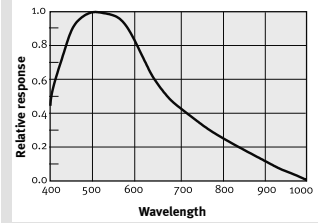
Plugs for cable:

- 12 pin: HIROSE HR10A-10P-12S
- 6 pin: HIROSE HR10A-7P-6S

## Ordering Information

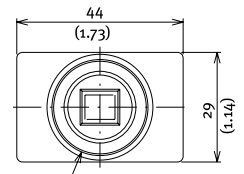
CV-A50C 1/2" Compact Industrial Monochrome CCD Camera. CCIR  
CV-A60C 1/3" Compact Industrial Monochrome CCD Camera. CCIR  
CV-A50E 1/2" Compact Industrial Monochrome CCD Camera. EIA  
CV-A60E 1/3" Compact Industrial Monochrome CCD Camera. EIA  
MP-40 Tripod Adapter (must be ordered separately)  
MP-70 Angle Adapter (must be ordered separately)

## Spectral Sensitivity

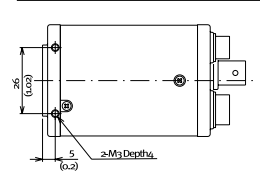


## Dimensions

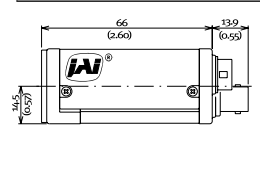
### Front view



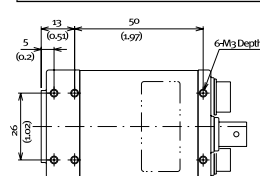
### Top view



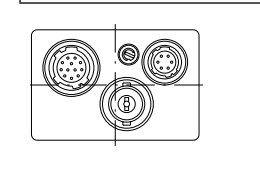
### Side view



### Bottom view



### Rear view



JAI A-S, Denmark  
Phone +45 4457 8888  
Fax +45 4491 8880  
www.jai.com

JAI Corporation, Japan  
Phone +81 45 440 0154  
Fax +81 45 440 0166  
www.jai-corp.co.jp

JAI UK Ltd., England  
Phone +44 1895 821481  
Fax +44 1895 824433  
www.jai.com

JAI PULNIX Inc., USA  
Phone (Toll-Free) +1 800 445 5444  
Phone +1 408 747 0300  
www.jai.com

JAI PULNIX, Germany  
Phone +49 (0) 6055 9379 10  
Fax +49 (0) 6055 9379 11  
www.jai.com



THE MECHADEMIC COMPANY